



# TRANSFORMATION *seeker*

Your Archetype Mini Report

The Transformation Seeker



[upsellhealth.com](https://upsellhealth.com)

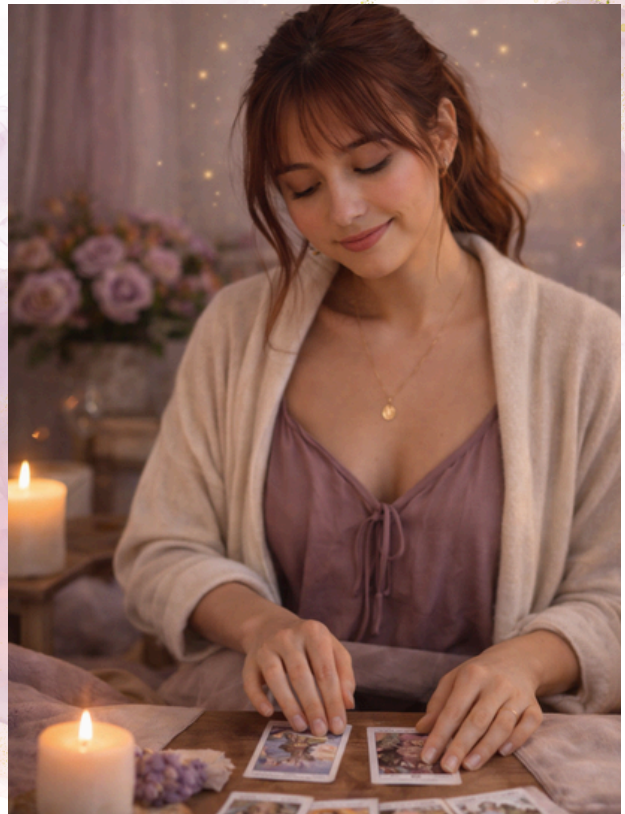


# OF YOUR HEALTH *approach*

## overview

As a Transformation Seeker, you bring distinct characteristics to your healing journey:

- ✦ Meaning-making orientation
- ✦ Holistic integration
- ✦ Readiness for deep work
- ✦ Growth through adversity
- ✦ Pattern recognition
- ✦ Experimental openness
- ✦ Narrative construction
- ✦ Identity fluidity



*I'm looking for the truth my body's been trying to tell me.*



# *O* CORE *wound*

You carry the wound of meaningless suffering — the fear that pain has no purpose, that loss is random, and that what you've endured leads nowhere. This wound likely began with experiences so heavy that carrying them without reason felt unbearable. Finding meaning wasn't just a choice — it was survival. The alternative, accepting that suffering creates nothing, was psychologically intolerable.

This is why you feel anxious when pain resists interpretation — when there's no lesson, no silver lining, no redemptive arc in sight. The need to find purpose in suffering runs deep because the alternative activates your original wound: that sometimes things just hurt for no reason at all.



Your transformation orientation is both genuine wisdom and a coping mechanism — born from moments where life demanded you change without asking permission. You turned unchosen pain into chosen growth, and that reframe has carried you. But it's worth holding gently: not every hard thing needs a meaning to be survived, and not every wound needs a purpose to be healed.

*Not every wound needs a purpose — but  
you'll never stop turning yours into power.*



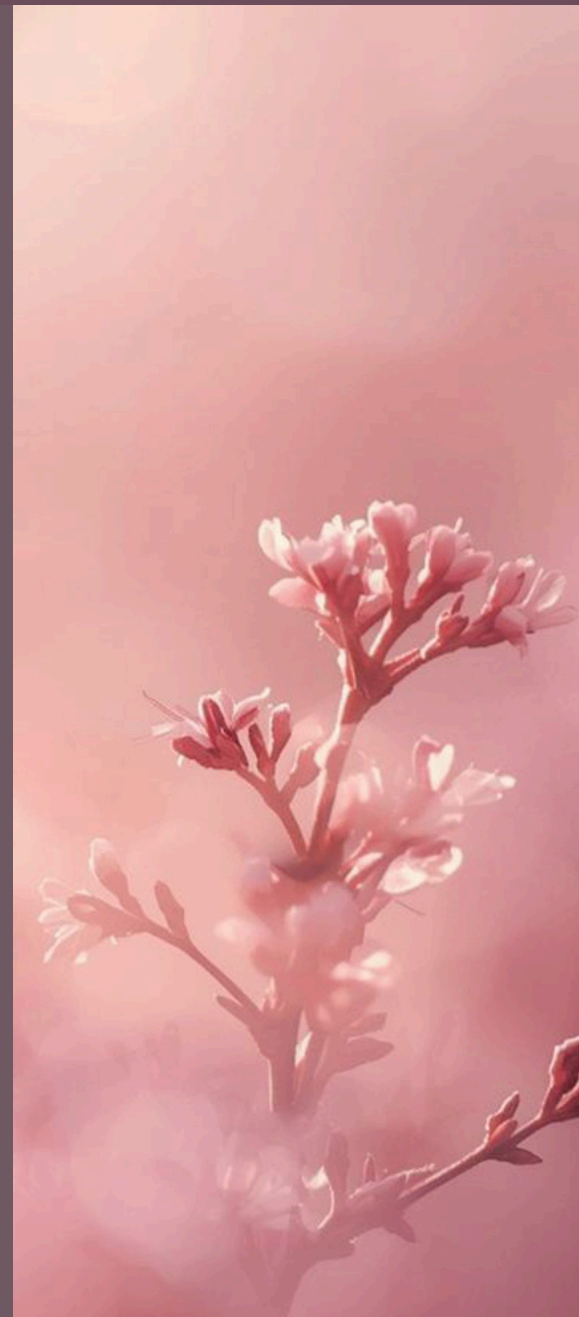
# 04 DEEPEST *motivation*

You are motivated by the desire for metamorphosis—to emerge from your health crisis as someone more authentic, more aligned, more fully alive than you were before. Your vision isn't returning to baseline; it's transcending baseline. The illness is an opportunity, and you intend to use it fully.

At your core is the belief that nothing is wasted—that even the hardest experiences can generate wisdom, compassion, and growth when engaged with consciously. This belief transforms your relationship to suffering from pure burden to mixed blessing. The pain is still pain, but it's pain in service of something.

You're also motivated by the recognition that illness often arises when life has gotten misaligned—when you've been living in ways that don't serve your deepest self. The symptoms are signals, and you're motivated to hear what they're saying, to let them guide you toward more authentic living.

The vision of who you could become through this process provides fuel for the difficult journey.



# 5 CHALLENGES

01

## The Spiritual Bypassing Trap

The search for meaning can become sophisticated avoidance of simply feeling pain. Finding purpose in suffering can serve genuine resilience—or it can prevent the raw emotional processing that healing requires. Learning to distinguish between them is essential.

02

## The Over-Interpretation Risk

Not every symptom carries cosmic significance. Sometimes illness is just biology—infection, genetics, environment—without deeper meaning. Insisting on finding significance where there isn't any can delay practical treatment and create unnecessary suffering.

03

## The Analysis Paralysis Problem

The search for meaning can substitute for action. While you're figuring out what your illness is teaching you, treatable conditions may progress. Meaning-making should supplement treatment, not replace it.

04

## The Transformation Attachment Paradox

Ironically, attachment to having a dramatic transformation can impede genuine change. If you're invested in a particular metamorphosis narrative, you might resist simpler healing that doesn't fit the story. Release attachment to how transformation should look.

05

## The Basics Neglect Issue

Focus on deep transformation can overshadow attention to foundations. The search for profound meaning shouldn't replace adequate sleep, proper nutrition, regular movement, and meaningful connection. Sometimes the most transformative thing you can do is take care of basics.

# Allie Chandler

Learn more about me [here](#)

## FOUNDER, UPSELL HEALTH Marketing Strategist for High-Level Healers

Helping functional medicine practitioners and wellness brands scale to \$2 million–50 million+ through heart-centered, aligned marketing with our proprietary Practitioner Archetype and Wellness Marketing Playbook systems



### FOR PRACTITIONERS + WELLNESS BRANDS

#### Archetype

Take your Practitioner Archetype Quiz [here](#)

#### Courses

Check out our DIY Marketing courses [here](#)

#### Shop

Buy templates, guides, checklists, swipe, graphics [here](#)

#### Work with Us

Apply to have our team take marketing off your hands [here](#)

#### Podcast

Watch our latest podcast episodes [here](#)

#### Favorites

Check out our favorites brands and tools [here](#)

### WHO I HELP



#### Functional Medicine Practitioners

earning \$2–10M who want to scale without burnout



**Supplement Companies** (\$20–50M+) ready to dominate practitioner channels



**Wellness Entrepreneurs** building courses, programs, and passive income



**Health Brands** seeking authentic marketing that converts

### LEADERSHIP EXPERIENCE

#### Director of Content



#### Head of Marketing & Events



#### Head of Consumer/Trade Marketing



#### Affiliates & VIP Strategic Partners



#### Marketing Consultant

Dr. Jay Davidson, Sinclair Kennally, Dr. Jaban Moore, Shivan Sarna, and many more

### PATIENTS + THOSE LOOKING TO HEAL

- Take your [Patient Archetype quiz here](#)
- Download our [Brain Healing Blueprint](#): Learn about the limbic system, mindset, therapies, & more
- Check out our [App: Meet Your Healer](#) to get matched with practitioners and brands for healing
- Listen to the [Podcast: Magnetic in Medicine](#)